

THE CO-HOSTS OF HUMANIZE  
PRESENT



# EMPOWER WITH YOUR POWER

A keynote program exploring the sustainability of equitable healthcare



# WHAT ARE PEOPLE NOT TELLING YOU BECAUSE THEY ARE NOT COMFORTABLE?



## PATIENTS

What part of their history is a patient withholding because they are intimidated?

## STAFF

Is someone distracted from their work because they feel their voice does not matter?

## COLLEAGUES

What insight is a colleague keeping to themselves because they fear being ridiculed?





**EQUITABLE HEALTH CARE INVOLVES EACH VOICE WITHIN THE ECOSYSTEM OF YOUR ORGANIZATION.**

## **Are you hearing them all?**

In this keynote, Dr. Courthney Russell Jr and Emily Braucher deliver a dynamic and interactive program that challenges participants to consider the impact of voice and power in their organization. Bringing perspectives from their radically different backgrounds, Courthney and Emily inspire people to have honest, authentic and critical conversations about power and privilege. Participants walk away with a shared vision of how an equitable model of health care leads to more accurate diagnosis, improved medical outcomes and greater financial sustainability. They leave knowing the next steps to take to ensure less is left unsaid at their organization.





# What people are saying

"Before them, I hadn't heard other people authentically face this subject of race and racism. These two are definitely courageous. And they are hilarious which always helps!"  
HUMANIZE LISTENER

"Emily was a hit! She grabbed our attention and held it the whole time."  
TECHSTARS, KEYNOTE CLIENT

"Very thoughtful, insightful, inspiring, and honest."  
HUMANIZE LISTENER

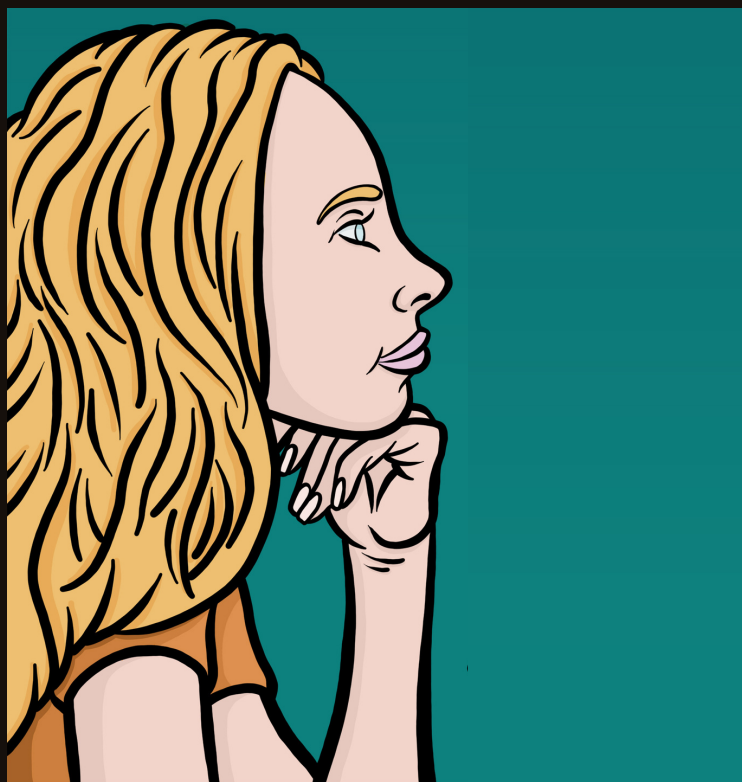
"Dr. Russell delivered a masterful presentation on changing healthcare, how it affects everyone, and solutions that work with actual results."  
KEYNOTE CLIENT

"If you can get Dr. Russell the only disappointment will be that you didn't get him sooner".  
KEYNOTE CLIENT

"Dr. Russell's candid manor and ability to make us feel comfortable about my mothers medical journey. He was there for questions and support every step of the way."  
PATIENT OF DR RUSSELL

"Emily gets powerful results!"  
TRAINING PARTICIPANT

## About Your Speakers



**Emily Braucher, MA, MA**

Emily is a public speaker singularly focused on helping people create trusting relationships across differences. For the last decade, she has worked with academic, nonprofit, corporate and government clients to strengthen the inclusive brain, foster the “trust mindset” and create psychological safety, always pointing people towards their highest potential. Her Masters work in Colombia was focused on developing a methodology for people in a position of power to research with (as opposed to research on) vulnerable populations. Her work incorporates neuroscience, decades of training and consulting experience, and two Masters degrees in topics related to culture and communication. She has lived in 11 countries and traveled in an additional 20, including 2 years as a rural health volunteer in the Peace Corps. She is the Executive Director of ReFresh Communication, LLC. She graduated from Brown University with a BA in Human Biology - Health and Disease.



**Courthney Russell Jr, MD**

Courthney is a motivational speaker, social entrepreneur, and community health organizer. He grew up in a rough and underserved area of Atlanta. In his youth, he learned survival skills while navigating high risk behavior and incarceration. Encouraged by his family, he applied to medical school where he found an endless passion and choose to dedicate his life to service. He experienced homelessness while in school which meant juggling the responsibilities of being a student and the realities of living on the street. After graduating in 2011, he was determined to become a community leader through leveraging his medical knowledge in a non-traditional way. He is the co-founder of Atlanta Awareness for Homeless Health (A2H2), a nonprofit focused on serving the health and wellness needs of the homeless and vulnerable. He is also the board president of Co-op on 1st, a Denver based organization serving high risk populations with health and nutrition services.

## Contact

+1.720.515.4198

emily@refreshcommunication.com

3550 Frontier Ave, Suite A2  
Boulder, CO 80301

refreshcommunication.com



Podcast Description: It's easy to say you believe in social justice, but engaging in honest conversations about race can be deeply uncomfortable, vulnerable, messy, and complex. Join co-hosts Courthney Russell (social entrepreneur, activist and doctor) and Emily Braucher (keynote speaker and mom) as they take on the kind of interracial dialogue needed to disrupt the current social order and create equity.